



**GIA**  
GEM TRADE LABORATORY

**New York Headquarters**  
580 Fifth Avenue | New York, NY 10036-4794  
T: 212-221-5858 | F: 212-575-3095

**Carlsbad**  
5355 Armada Drive | Carlsbad, CA 92008-4699  
T: 760-603-4500 | F: 760-603-1814

**COLORED DIAMOND  
IDENTIFICATION AND ORIGIN REPORT**

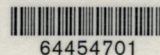
GIA REPORT 11178101

August 17, 2000

Shape and Cutting Style ..... ROUND BRILLIANT  
Measurements ..... 5.64 - 5.77 x 3.68 mm  
Weight ..... 0.79 carat

Color  
Origin ..... NATURAL  
Grade ..... VERY LIGHT  
..... GREEN  
Distribution ..... NOT APPLICABLE

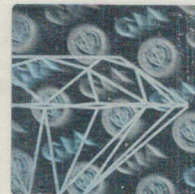
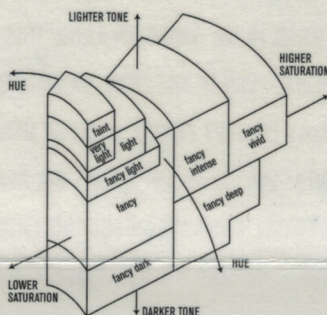
Comments:  
NONE



This Report is not a guarantee, valuation or appraisal. This Report contains only the characteristics of the diamond described herein after it has been graded, tested, examined and analyzed by GIA Gem Trade Laboratory under magnification, and/or has been inscribed, using the techniques and equipment available to GIA Gem Trade Laboratory at the time of the examination and/or at the time of being inscribed, including magnification, master color comparison diamonds, standardized viewing environment and light source, electronic carat balance, high intensity short wave fluorescence imaging system, optical measuring device, micro laser inscribing device, ProportionScope®, ultraviolet lamps, millimeter gauge, additional visual color comparators, spectroscopy, Illuminator Polariscope®, immersion liquids, ultraviolet-visible and infrared spectrometers, X-ray fluorescence spectrometer, gamma-ray spectroscopy systems, beta radiation scintillation detector, radiation survey meter, X-ray luminescence equipment, and ancillary instruments as necessary. The recipient of this Report may wish to consult a credentialed Jeweler or Gemologist about the information contained herein.

**GIA  
COLORED  
DIAMOND  
SCALE**

Generic illustration of GIA fancy color grade interrelationships



**IMPORTANT DOCUMENT, STORE SAFELY**

The security features in this document, including the hologram, security screen, microprint lines and chemical sensitivity, in addition to those not listed, exceed document security industry guidelines.

**NOTICE: IMPORTANT  
LIMITATIONS ON BACK**

COPYRIGHT © 2000 GIA GEM TRADE LABORATORY